



INSTALLATION ADDENDUM | MAY 2018  
**MIRAIA**

## MIRAIA

PLEASE REFER TO THE *HORIZONTAL INSTALLATION GUIDE*. This is available at [nichiha.com/resources/installation](http://nichiha.com/resources/installation).

Miraia panels are AWP-1818 and are installed in the same manner. The panels are 16mm (5/8") thick and may be used directly with any other AWP-1818 of this thickness. However, Miraia panels' unique high gloss finish necessitates some special care and attention. This document serves to supplement the full *Horizontal Installation Guide* for AWP.

---

### MIRAIA KIT

Included with your shipment of Miraia panels is a kit consisting of a printed copy of this guide, palm-coated gloves, Touch-Up Patches, microfiber cloths, and a fiber cement saw blade.

---

### PRODUCT INSPECTION

Inspect all products thoroughly prior to installation. Do not install any product which may have been damaged in shipment or appears to have a damaged or irregular finish. Should you have a question or problem with your order, contact your local dealer or Nichiha Customer Service, toll-free, at 1.866.424.4421. Keep the products dry prior to installation. It is best to store the products indoors.

---

### STORAGE & HANDLING

If storing AWP outdoors, the product must be covered at all times to prevent the material from getting wet. Do not install wet product.

Panels must be stored flat and kept dry before installation. Refer to the storage information included on product pallets.

Panels must be carried on edge. Do not carry or lift panels flat as improper handling may cause cracking or panel damage. Wear palm-coated gloves when handling Miraia panels.

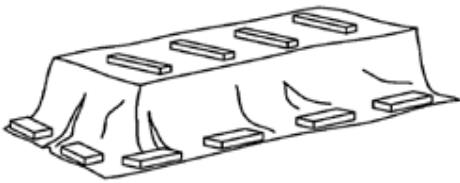
Direct contact between the panels and the ground must be avoided at all times.

Do not stack Miraia panels after the packaging is opened.

It is necessary to keep panels clean during the installation process.



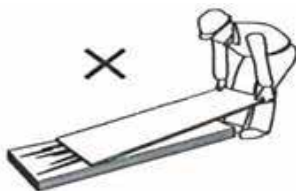
Miraia panels are a fully prefinished product and must be handled with care.



Keep product dry. Cover with a tarp if storing outdoors.



Always carry panels on edge.



DO NOT stack panels after the packaging is opened.

---

## PANEL CUTTING

Use a soft, protective surface when cutting panels such as foam insulation board or the slip sheets included in Nichiha panel packaging.

Panels should be cut from the back side of the board (i.e. face down). Use a fiber cement saw blade and *observe all OSHA safety requirements. See the Technical Bulletin: [Crystalline Silica](#).*

---

## EDGE SEALING

Any cut panel edges must be coated with exterior grade 100% acrylic latex primer or paint. *Do not attempt to apply paint to finished Miraia panel surfaces.*

---

## FACE FASTENING

Pre-drill panels where face fasteners will be required (horizontally cut edges). Use a countersink drill bit with a chamfer matching the head diameter of the face fastener screws to be used.

A number 7, full threaded bugle/trim head type screw is appropriate for AWP face fastening.

---

## PANEL INSTALLATION

Miraia panels are AWP-1818 and install in the same manner, following all requirements as the other 1818mm panels, with Ultimate Clips, Joint Tab Attachments, and Starter Track.

For outside corners, metal trim (Corner Key and/or Open Outside Corner) is required as factory panel Corners are not available for Miraia.

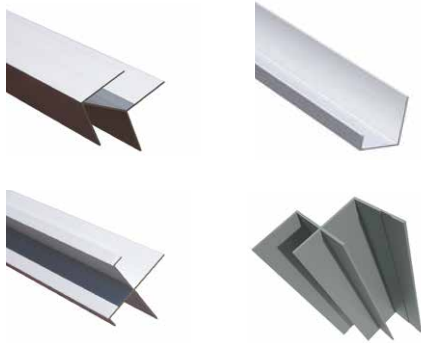
Refer to the *Horizontal Installation Guide* for all other requirements and procedures such as clearances, sealants, vertical control/expansion joints, compression joints, etc.

Miraia can be installed on their own in stacked or staggered layouts, and they may also be fitted within other 16mm-thick AWP-1818 such as Illumination and TuffBlock.



ARCHITECTURAL WALL PANELS | AWP-1818, AWP-3030 | MAY 2018

### Horizontal Installation Guide



Tamlyn metal trims are available in the Miraia panel colors: Glacier, Onyx, and Snow.

---

## PROTECTIVE FILM

A protective clear plastic film is affixed to the Miraia panel surface. This film is NOT designed to remain on the product. It must be fully removed immediately following completion of the installation on each elevation. Failure to remove the film at installation completion could damage the product and affect its appearance and finish.

When installing Miraia panels into metal trim, peel back the film at the panel edge prior to insertion into the trim. Also, peel back the film away from panel edges prior to adding Touch-Up Patches over face fasteners.



---

## CLEANING

After the protective film is removed, if any dust generated from panel cutting and/or any dirt clings to the panel surface, it is important to clean it off. Compressed air or a dry microfiber cloth such as one provided in the kit are the best tools. Remove any fingerprints with a clean, dry microfiber cloth.

Any remaining hard-to-clean dirt may be removed by mild household detergent, water, and a sponge. Rinse thoroughly with a garden hose.

---

## TOUCH-UP PATCHES

Remove the clear protective film prior to affixing Touch-Up Patches.

Add Touch-Up Patches at the cleaned face fastener locations and to any small blemishes.

Patches may only be applied in dry conditions.

Blemishes larger than the Patches necessitate replacing the Miraia panel.



# Behind our Architectural Wall Panels is SOME SERIOUS TECHNOLOGY.



## EASY INSTALLATION

Time-saving Clip Installation System that reduces construction time and minimizes mistakes.



## NO MORTAR, NO MESS

Pre-finished panels that eliminate the need for messy mortar or costly masonry-skilled labor.



## ANY WEATHER PRODUCT

Products that can be installed year round in any climate across the country. No geographical restrictions means more possibilities.



## LOW MAINTENANCE

No-fuss products. Little ongoing cleaning or regular maintenance needed. You get to bring your vision to life and ensure it looks great for a long time.



## ENGINEERED FOR PERFORMANCE

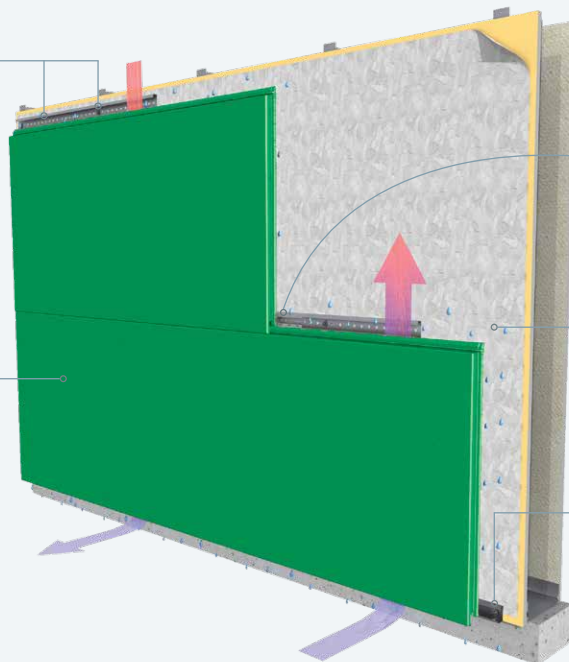
Go beyond our durable panels and discover a meticulously engineered moisture management system that provides a vertical drainage point for air and moisture to exit.

### THE ULTIMATE CLIP

creates a hidden fastening system that all but eliminates face fastening. Installation is quick and easy and never requires specialty subcontractors.

### NICHIHA ARCHITECTURAL WALL PANELS

are lightweight, easy to handle and available in a virtually endless color palette and a diverse offering of textural finishes.



### NICHIHA'S JOINT TAB ATTACHMENT

is designed to support panel lateral stability, helping vertical joints stay tightly closed. The tab fits in place easily and is fastened to the Ultimate Clip with provided screw.

### DRAINED AND BACK VENTILATED RAINSCREEN

design allows water to escape and air to circulate, reducing the risk of mold and water damage inside the building.

### THE ULTIMATE STARTER TRACK

pulls double-duty. It ensures a fast, level installation and its patented drainage channel directs water out and away from the base of the wall.

# Never underestimate the power of REALLY GOOD TOOLS.

---

Whether you are an architect, a builder or a contractor, Nichiha wants to ensure that you have all the information you need to make your project go as smoothly as possible. The way we see it, we are partners. Our website offers a comprehensive collection of technical information, installation videos, Architectural details, in-depth specifications and everything you'll ever need to know about installing Nichiha products.



## DESIGN REVIEW GUIDE

Download our quick reference guide to get an overview on our Architectural Wall Panels.

[http://www.nichiha.com/images/uploads/DesignReviewGuide\\_Electronic.pdf](http://www.nichiha.com/images/uploads/DesignReviewGuide_Electronic.pdf)



## ARCHITECTURAL DETAILS

Take a closer look and download our conceptual detail drawings.

[nichiha.com/resources/cad](http://nichiha.com/resources/cad)



## INSTALL VIDEOS

Watch our installation instructions come to life — check out our installation videos today!

[nichiha.com/commercial/install](http://nichiha.com/commercial/install)



## SUPPORT

Our in-house technical team is here to assist. If you have questions, comments or concerns, call or email us.

1.866.424.4421 or [technicalservices@nichiha.com](mailto:technicalservices@nichiha.com)

# THE POWER OF POSSIBILITIES AND PARTNERSHIPS

Your creative vision is unique. That's why Nichiha wants to offer you the power of cooperation to help your project move from conception to completion. Our ever-expanding offering of textures and finishes lift buildings to new and unexpected places and we want to share them with you. We place a high value on our relationships and are proud to work with our dedicated partners across the country. Join us and discover the power of possibilities and partnerships with Nichiha.

## NICHIHA WARRANTIES

- ILLUMINATION SERIES PANELS  
15-year limited warranty\* on panels,  
15-year limited warranty\* on finish.
- ARCHITECTURAL WALL PANELS  
(Brick, Block, Stone, Wood, Kurastone)  
15-year limited warranty\* on panels,  
15-year limited warranty\* on finish.
- METAL TRIM  
Tamlyn warrants defective-free products for a period of 10 years for the original purchaser. Please visit [tamlyn.com](http://tamlyn.com) for detailed information on terms, conditions and limitations.

\*See Nichiha warranties for detailed information on terms, conditions and limitations. Visit [nichiha.com](http://nichiha.com) for easy downloadable warranties or call toll-free 1.866.424.4421 for a copy.

Nichiha SDS are available on [nichiha.com](http://nichiha.com).

## CERTIFICATION & TESTING



Report  
EC-58



Florida Approval  
12875



Report  
PER-14088



WUI  
8140-2029



Miami-Dade  
NOA 16-0404.18



*the power of possibilities™*

CRYSTALLINE SILICA DUST WARNING: Nichiha products may contain some amounts of crystalline silica [a.k.a. sand, silicone dioxide], which is a naturally occurring mineral. The amount will vary from product to product. Inhalation of crystalline silica into the lungs and repeated exposure to silica can cause health disorders, such as silicosis, lung cancer, or death depending upon various factors. To be conservative, Nichiha recommends that whenever cutting, sawing, sanding, sniping, or abrading the product, users observe appropriate safety protocols. For further information or questions, please consult Nichiha SDS, your employer, or visit [osha.gov/silica](http://osha.gov/silica) and [cdc.gov/niosh/topics/silica](http://cdc.gov/niosh/topics/silica). The SDS for Nichiha products are available at [nichiha.com/resources](http://nichiha.com/resources), at your local Nichiha dealer, or through Nichiha directly at 1.866.424.4421. FAILURE TO ADHERE TO OUR WARNINGS, SDS, AND OTHER INSTRUCTION MAY LEAD TO SERIOUS PERSONAL INJURY OR DEATH.

6465 E. JOHNS CROSSING, SUITE 250, JOHNS CREEK, GA 30097 | 866.424.4421 | [NICHIHA.COM](http://NICHIHA.COM)  
©2018 Nichiha USA, Inc. All rights reserved. Printed in the USA. NLC 4K 5.18 | WEB 5.18

